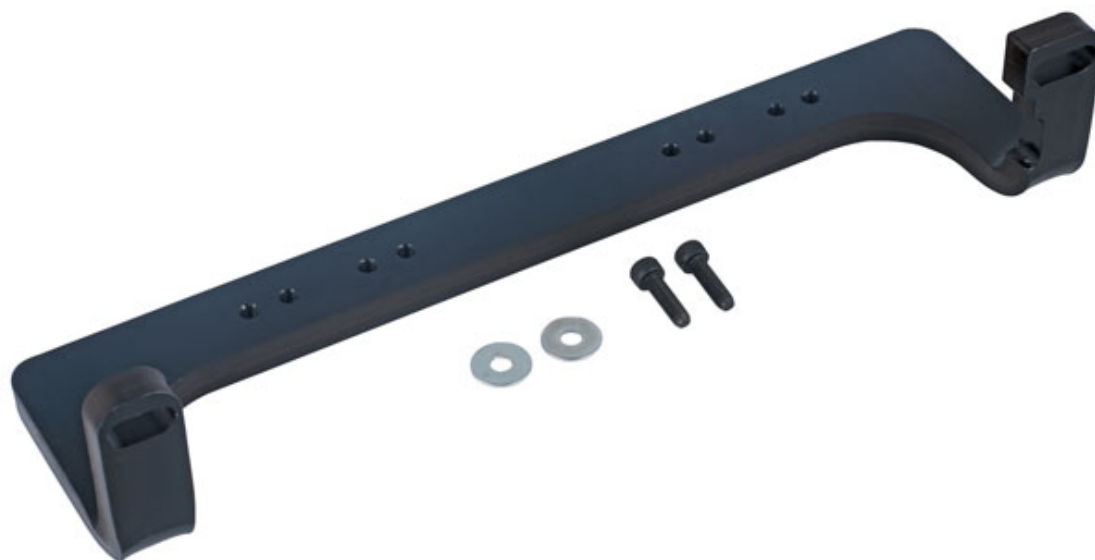


## Engine Timing Kit Upgrade Bridge - for BMW, MINI Petrol

An updated camshaft timing bridge to cover the post 2017 versions of the BMW B48 engine as well as the pre 2017 versions. Designed to be used with the Laser 7242 kit sold prior to February 2020. \*Post Feb 2020 the 7242 kits already include this bridge\*.



### Additional Information

- Updated camshaft bridge for all B48 1.6 & 2.0L petrol engines.
- Applications include: BMW 1 Series (2014 - 2019), 2 Series (from 2014), 3 Series (from 2015), 4 Series (from 2015), 6 Series (from 2017), 7 Series (from 2015), i8 (from 2014), X1 (from 2015), X3 (from 2017), X4 (from 2018), Z4 (from 2019); Mini Clubman (from 2015), Hatch (from 2014), Convertible (from 2016), Countryman (from 2017).
- Engine Applications: B38 (1.2L & 1.5L), B48 (2.0L), B58 (3.0L).
- Equivalent to OEM tools: 2 358 122 & 2 456 372 camshaft bridges.
- Use with pre February 2020 Laser Timing Chain Kit - BMW MINI 1.2, 1.5, 2.0, 3.0 Petrol, Part No. 7242.

<http://lasertools.co.uk/product/61525>

